

Networking 101

ISP/IXP Workshops

Network Topology and Definitions

Cisco.com

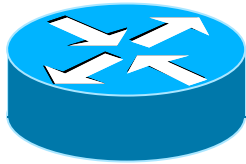
- **Definitions and icons**
- **Network topologies**
- **PoP topologies**
- **Interconnections and IXPs**
- **IP Addressing**
- **Gluing it all together**

Topologies and Definitions

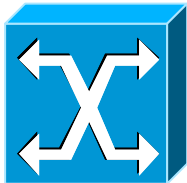
What does all the jargon mean?

Some Icons

Cisco.com



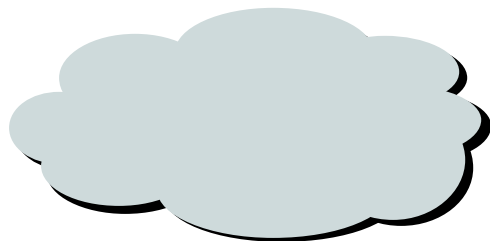
Router
(layer 3, IP datagram forwarding)



ATM or Frame Relay switch
(layer 2, frame or cell forwarding)



Ethernet switch
(layer 2, packet forwarding)



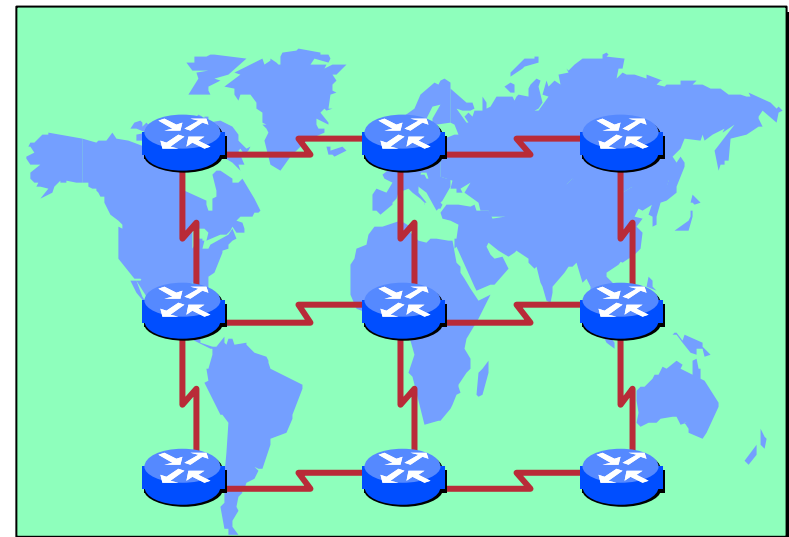
Network Cloud

Network Topologies

Cisco.com

Routed backbone

- **Routers are the infrastructure**
- **Physical circuits run between routers**
- **Easy routing configuration, operation and troubleshooting**

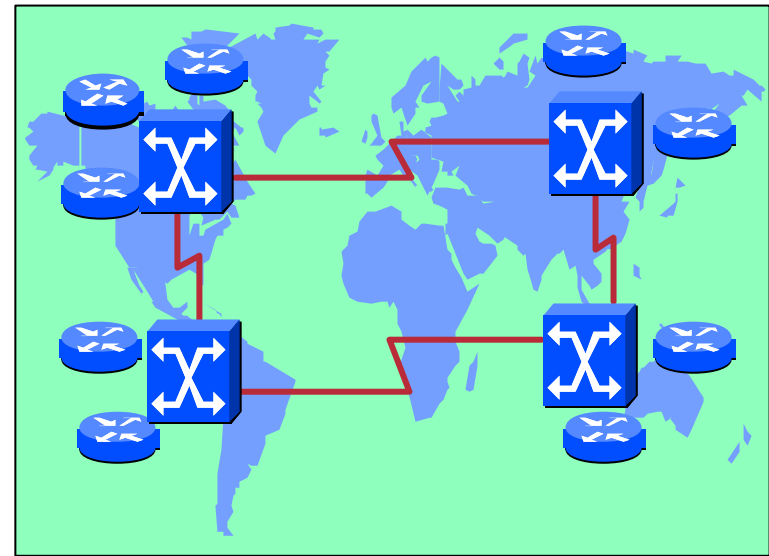


Network Topologies

Cisco.com

Switched backbone

- **frame relay or ATM**
switches in the core
surrounded by routers
- **Physical circuits run
between switches**
Virtual circuits run
between routers
- **more complex routing
and debugging**
- **“traffic management”**



Definitions

Cisco.com

- **PoP – Point of Presence**

Physical location of ISP's equipment

Sometimes called a “node”

- **vPoP – virtual PoP**

To the end user, it looks like an ISP location

In reality a back hauled access point

Used mainly for consumer access networks

- **Hub/SuperPoP – large central PoP**

Links to many PoPs

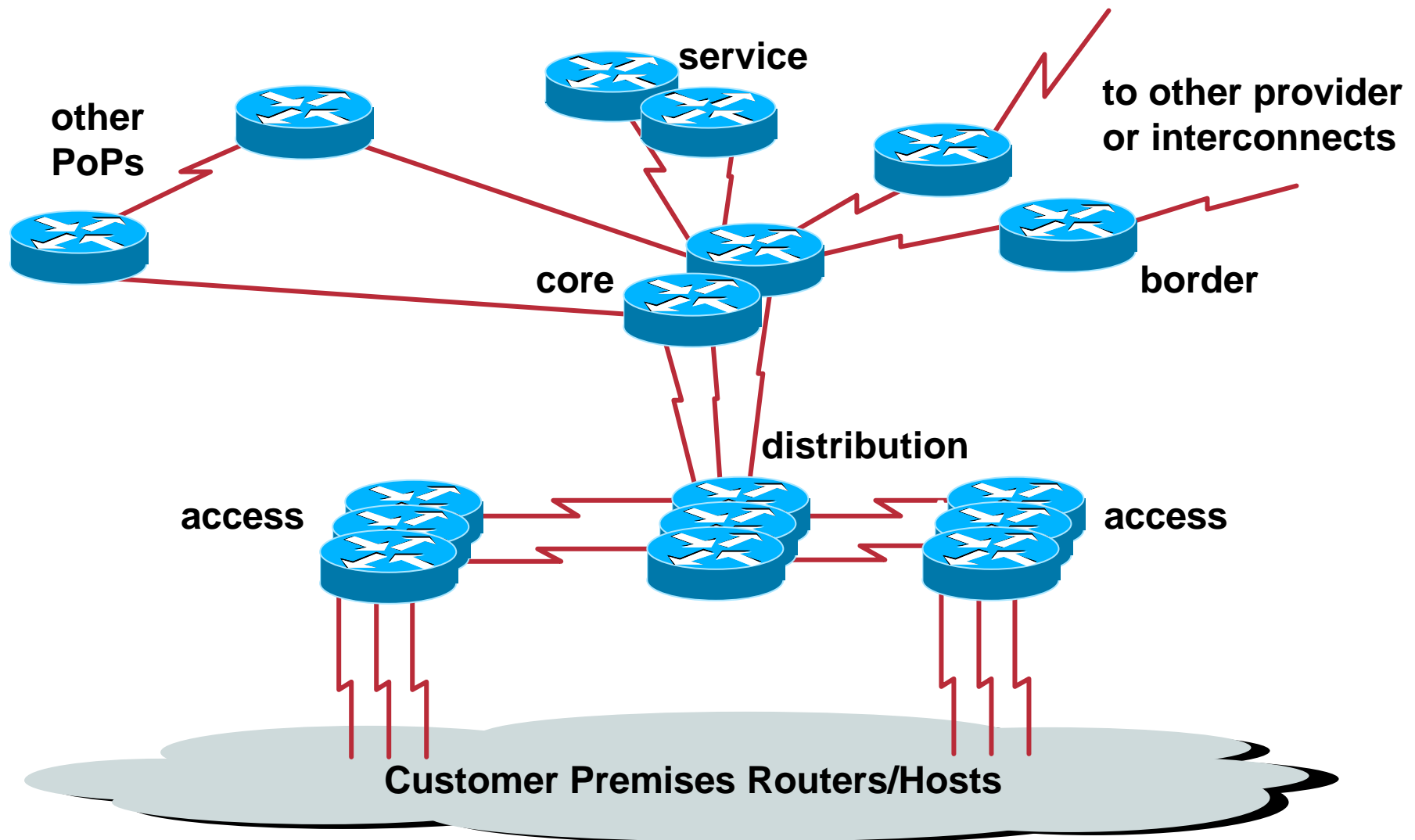
PoP Topologies

Cisco.com

- **Core routers**
high speed trunk connections
- **Distribution routers**
higher port density, aggregating network edge to the network core
- **Access routers**
high port density, connecting the end users to the network
- **Border routers**
connections to other providers
- **Service routers**
hosting and servers
- **Some functions might be handled by a single router**

PoP Topologies

Cisco.com



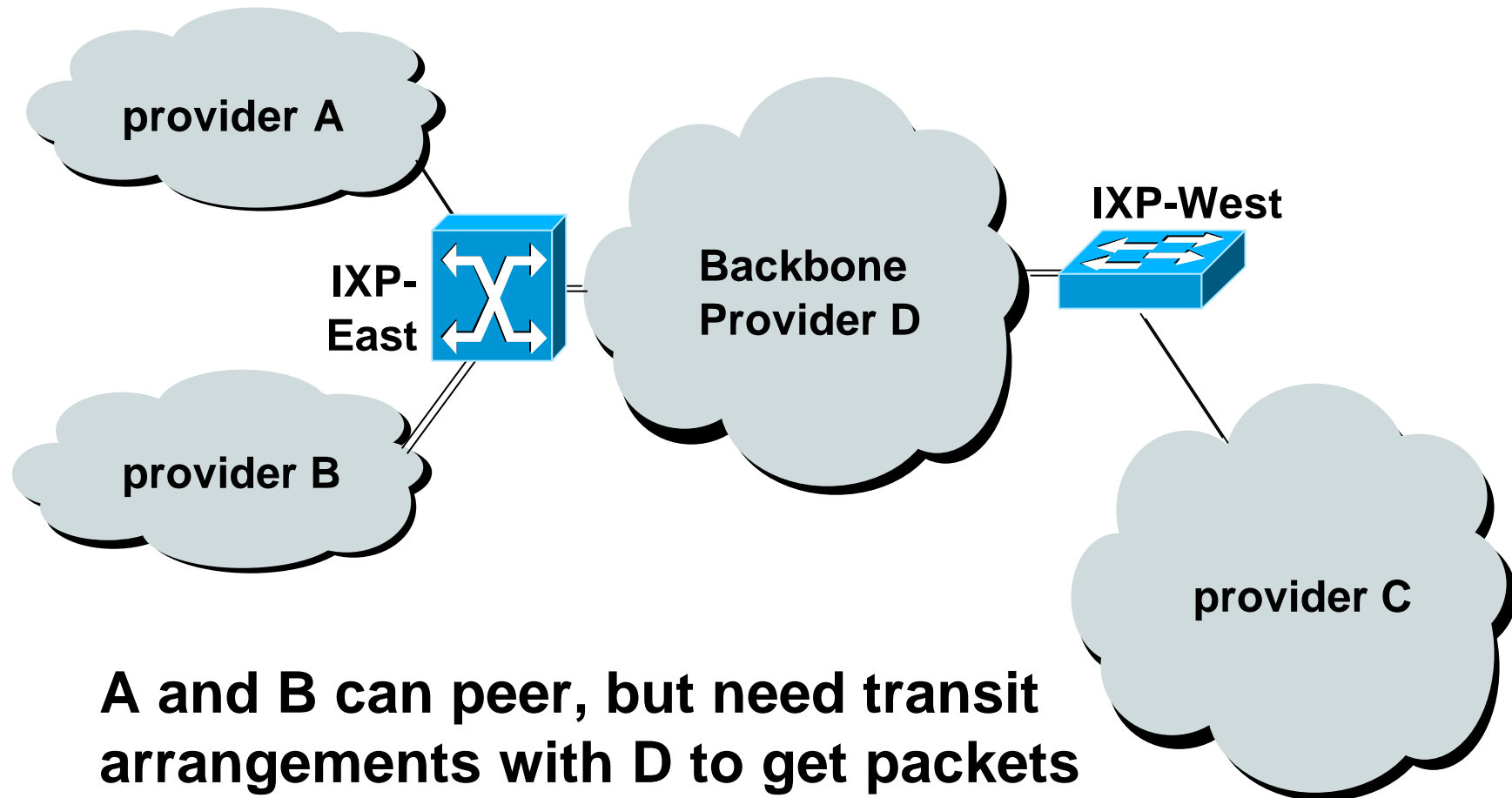
Definitions

Cisco.com

- **Transit** – carrying traffic across a network, usually for a fee
- **Peering** – exchanging routing information and traffic
- **Default** – where to send traffic when there is no explicit match in the routing table

Peering and Transit example

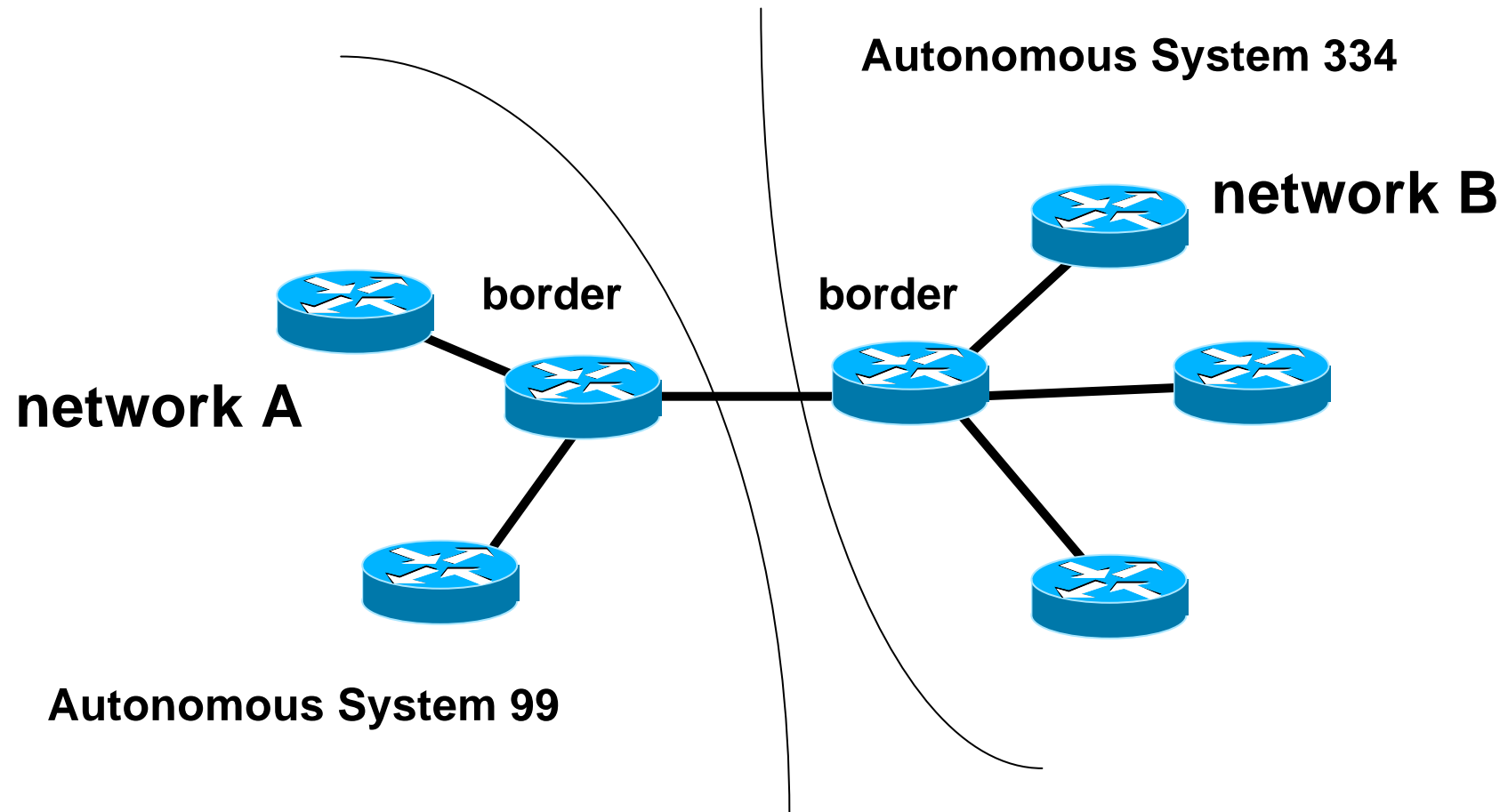
Cisco.com



A and B can peer, but need transit arrangements with D to get packets to/from C

Private Interconnect

Cisco.com



Public Interconnect Point

Cisco.com

- **IXP – Internet eXchange Point**
- **NAP – Network Access Point**
- **Location or facility where several ISPs are present and connect to each other over a common shared media**

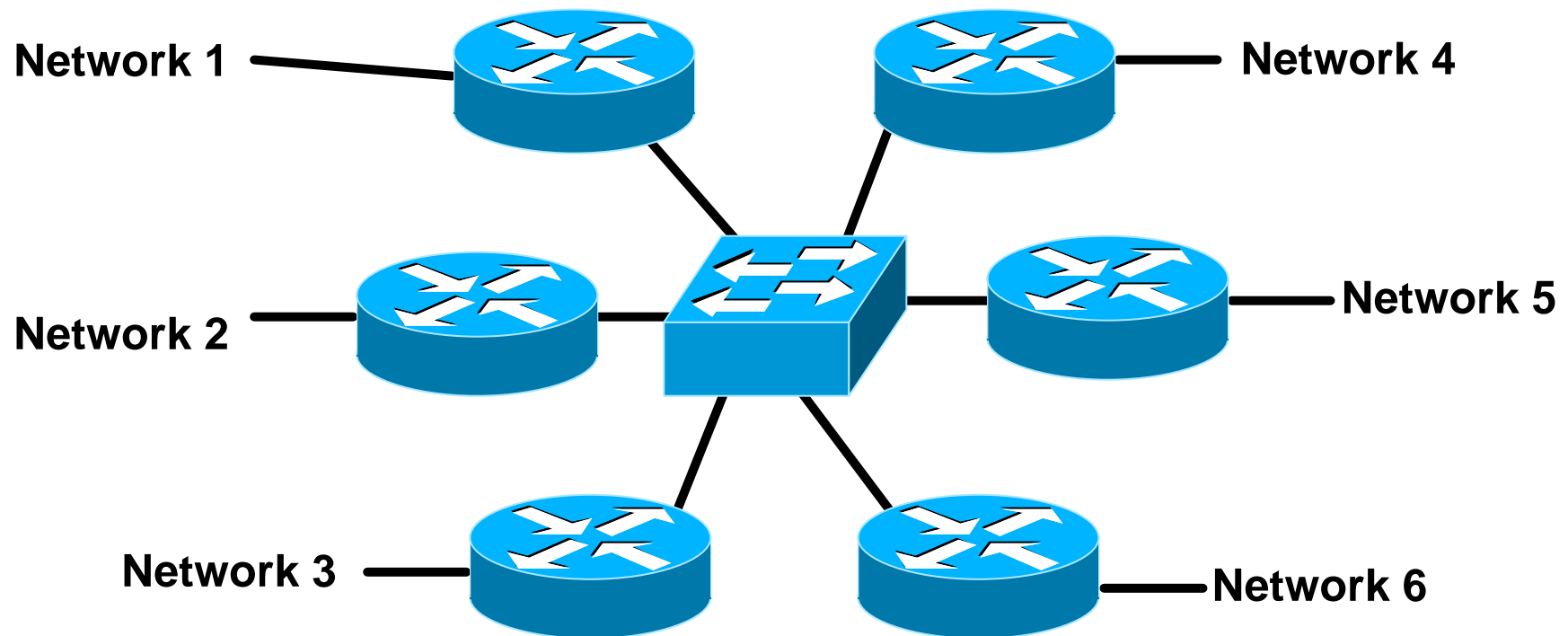
Public Interconnect Point

Cisco.com

- **Centralised (in one facility)**
- **Distributed (connected via WAN links)**
- **Shared, switched or routed interconnect**
 - Router, FDDI, Ethernet, ATM, Frame relay, SMDS, etc.**
- **Each provider establishes relationship with other provider at IXP**
 - ISP border router peers with all other provider border routers**

Public Interconnect

Cisco.com



each of these represents a border router in a different autonomous system

Route Server

- **Purpose:**
Collects all the routes heard from ISPs at the IXP and sends them to all ISPs at the IXP
- **Advantages:**
reduces resource burden on border routers (CPU, memory, configuration complexity)
reduces administrative burden on providers
- **Disadvantages:**
must rely on a third party (for management, configuration, software updates, maintenance, etc)

Route Collector

Cisco.com

- **Purpose**

Collects all the routes heard from ISPs at the IXP

- **Advantages**

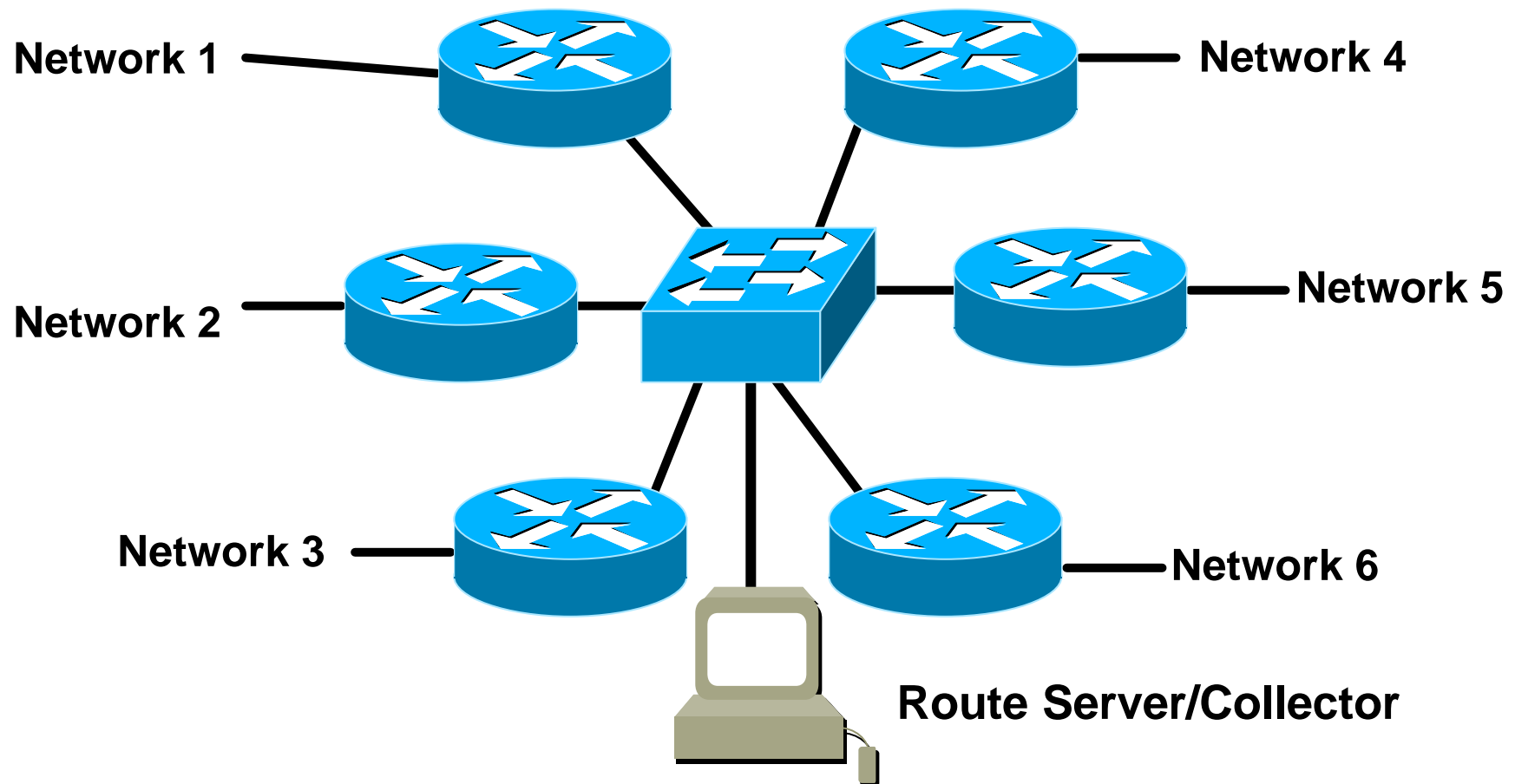
Allows IXP participants to see destinations available at the IXP

Useful for troubleshooting, information, “IXP Marketing”

- **Basically a Route Server without the ability to send routing information to participant ISPs**

Route Server

Cisco.com



IP Addressing

Where to get address space and who from

IP Addressing

Cisco.com

- Internet is **classless**
- Concept of Class A, class B or class C is **no more**
engineers talk in terms of prefix length, for example the
class B 158.43 is now called 158.43/16.
- All routers must be **CIDR** capable
Classless InterDomain Routing
RFC1812 – Router Requirements

IP Addressing

Cisco.com

- **Pre-CIDR (<1994)**
 - big networks got a class A
 - medium networks got a class B
 - small networks got a class C
- **Nowadays**
 - allocations/assignments made according to demonstrated need – **CLASSLESS**

IP Addressing

Cisco.com

- IPv4 Address space is a resource **shared** amongst **all** Internet users

Regional Internet Registries delegated allocation responsibility by the IANA

APNIC, ARIN, LACNIC & RIPE NCC are the four RIRs

RIRs **allocate** address space to ISPs and Local Internet Registries

ISPs/LIRs **assign** address space to end customers or other ISPs

- 57% of usable IPv4 address space has been allocated

Definitions

- **Non-portable – ‘provider aggregatable’ (PA)**
 - Customer uses RIR member’s address space while connected to Internet**
 - Customer has to renumber to change ISP**
 - Aids control of size of Internet routing table**
 - May fragment provider block when multihoming**
- **PA space is allocated to the RIR member with the requirement that all assignments made by the RIR member to end sites are announced as an aggregate to the rest of the Internet**

Definitions

Cisco.com

- **Portable – ‘provider independent’ (PI)**

Customer gets or has address space independent of ISP

Customer keeps addresses when changing ISP

Bad for size of Internet routing table

PI space is rarely distributed by the RIRs

Internet Hierarchy

The pecking order

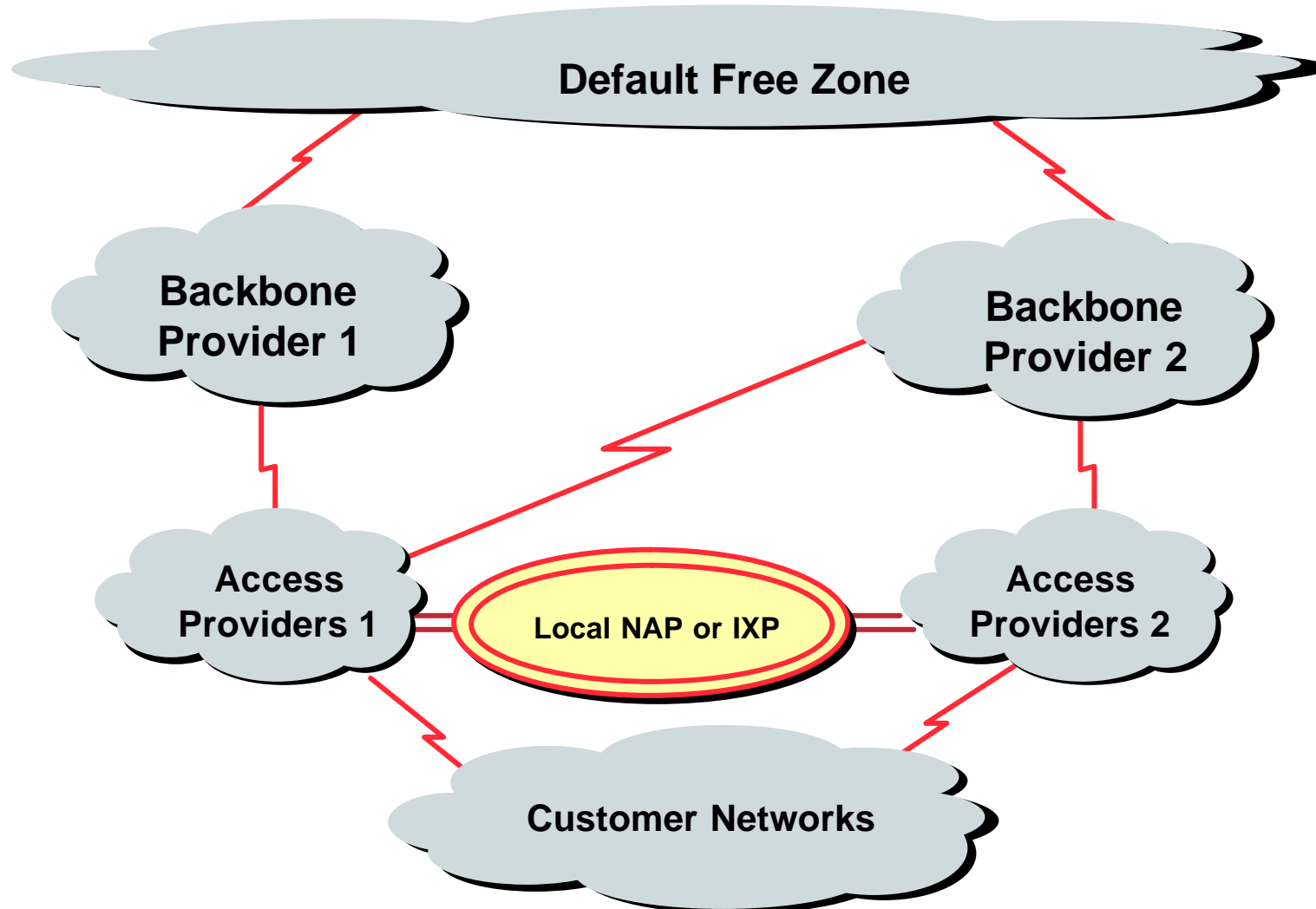
Default Free Zone

Cisco.com

The default free zone is made up of Internet routers which have explicit routing information about the rest of the Internet, and therefore do not need to use a default route.

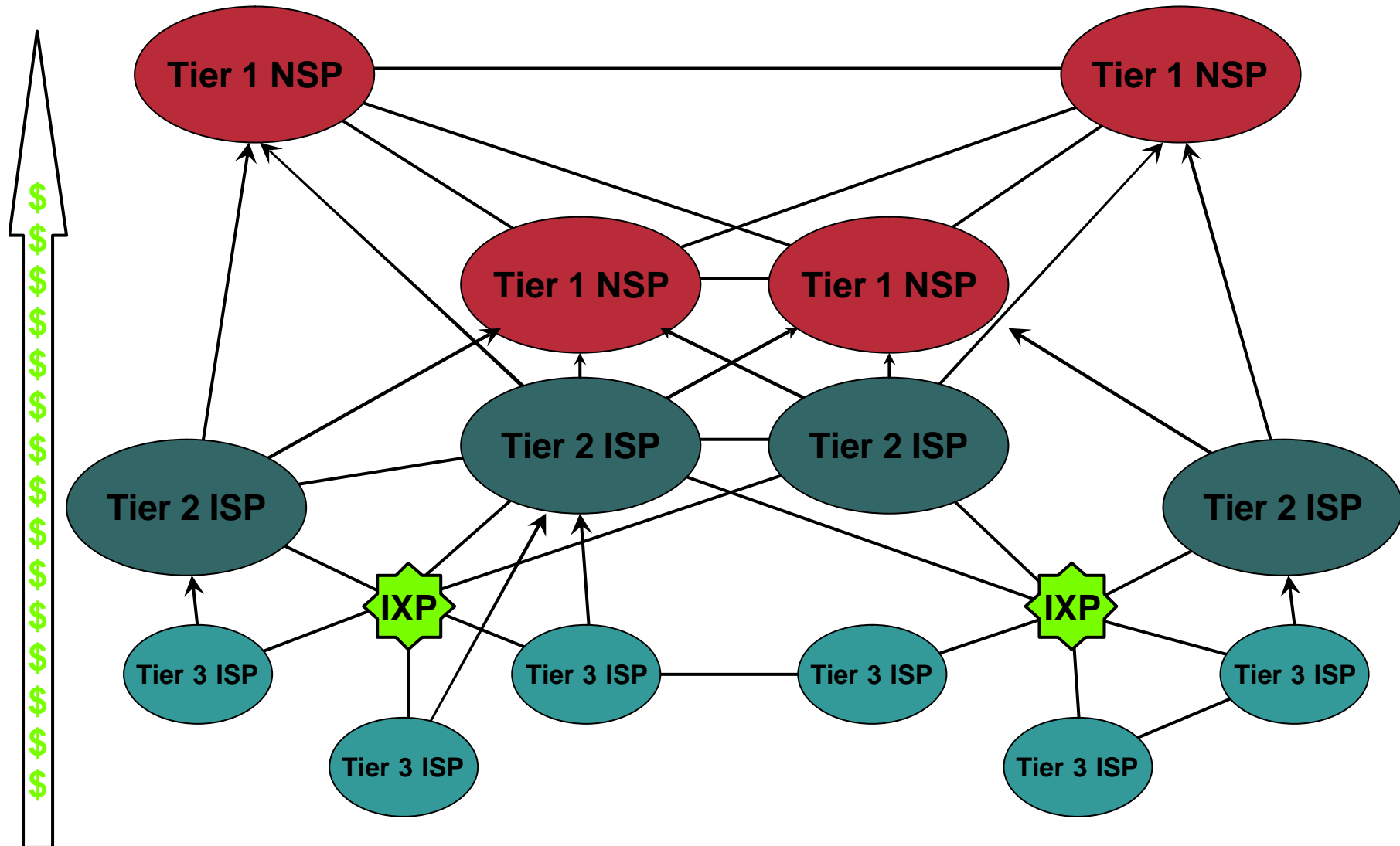
High Level View of the Global Internet

Cisco.com



Categorising ISPs

Cisco.com



Inter-provider relationships

Cisco.com

- **Peering between equivalent sizes of service providers (e.g. Tier 2 to Tier 2)**
shared cost private interconnection, equal traffic flows
“no cost peering”
- **Peering across exchange points**
if convenient, of mutual benefit, technically feasible
- **Fee based peering**
unequal traffic flows, “market position”

Gluing it together

Gluing it together

Cisco.com

- **Who runs the Internet?**

No one

- **How does it keep working?**

Inter-provider business relationships and the need for customer reachability ensures that the Internet by and large functions for the common good

- **Any facilities to help keep it working?**

Not really. But...

Engineers keep talking to each other!

Engineers keep talking to each other...

Cisco.com

- **North America**

NANOG (North American Network Operators Group)

NANOG meetings and mailing list

- **Latin America**

Foro de Redes

- **Europe**

RIPE meetings, working groups and mailing lists

EOF (European Operators Forum)

Engineers keep talking to each other...

Cisco.com

- **Asia & Pacific**
 - APRICOT annual conference**
 - APOPS & APNIC-TALK mailing lists**
 - SANOG (South Asia NOG)**
- **Africa**
 - AfNOG meetings and mailing list**
- **And many in-country ISP associations and NOGs**
- **IETF meetings and mailing lists**

Summary

Cisco.com

- **Network Topologies and Definitions**
- **IP Addressing**
 - PI versus PA address space**
- **Gluing it all together**
 - Engineers co-operate**

Networking 101

ISP/IXP Workshops